



South Carolina

TRUCKING FAST FACTS



TRUCKING DRIVES THE ECONOMY

CAREERS

106,890

Trucking industry jobs
in South Carolina (2018)



That's **1 in 16** jobs in the state

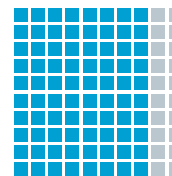


SMALL BUSINESS EMPHASIS



Trucking companies located in
South Carolina (2019). Primarily
small, locally owned businesses, these
companies are served by a wide range of
supporting businesses.

TRANSPORTING THE ESSENTIALS



79.8%

of South Carolina
communities depend
exclusively on trucks to
move their goods.



Percent of manufactured
tonnage transported by
trucks in the state.
**That's 112,120 tons
per day.** (2012)

COMPETITIVE WAGES

- Total trucking industry wages paid in South Carolina in 2018 exceeded **\$5 billion**, with an average annual trucking industry salary of **\$46,870**.
- Heavy and tractor-trailer truck drivers held **29,620** jobs with an average annual salary of **\$44,270** (U.S. Bureau of Labor Statistics, 2018).

SAFETY MATTERS

SAFETY FIRST

South Carolina Trucking Association members
put safety first through:

- ✓ Improved driver training
- ✓ Investment in advanced safety technologies
- ✓ Active participation in industry safety initiatives at the local, state and national levels

CONTINUALLY IMPROVING

2017 fatal crash rate per
100 million Vehicle Miles
Traveled (VMT):

SC

1.55

USA

1.42

69% The amount by which the U.S.
large truck fatal crash rate has
dropped between 1975 and 2017.

COMMITMENT TO SHARING THE ROAD



The **Share the Road** program
sends a team of professional
truck drivers to communities
around the country to teach car
drivers about truck blind spots,
stopping distances and how to
merge safely around large
trucks, all designed to reduce the
number of car-truck accidents.



South Carolina

TRUCKING FAST FACTS



\$ TRUCKING PAYS THE FREIGHT

THE INDUSTRY

\$592 million

Amount the trucking industry in South Carolina paid approximately in federal and state roadway taxes (2018).

The industry paid **38%** of all taxes owed by South Carolina motorists ...



... despite trucks representing only **7%** of vehicle miles traveled in the state.



INDIVIDUAL COMPANIES

As of January 2020, a typical five-axle tractor-semitrailer combination paid:

\$7,151 + **\$8,906**
state highway user fees and taxes federal highway user fees and taxes

These taxes were over and above the typical taxes paid by businesses in South Carolina.



ROADWAY USE

Miles of public roads in South Carolina (2018). **77,992**

Miles driven on public roads:

All Motorists: 56.8 billion



Trucks: 3.9 billion

TRUCKS DELIVER A CLEANER TOMORROW

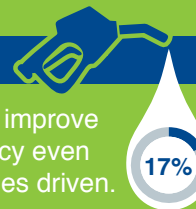
EMISSIONS

- ✓ **43%** of U.S. commercial trucks are now powered by the newest-generation, near-zero emissions diesel technology.
- ✓ Medium- and heavy-duty trucks contribute just **23%** of all transportation-related greenhouse gas (GHG) emissions in the U.S. and represent only **6%** of total U.S. GHG emissions.

FUEL CONSUMPTION

The trucking industry continues to improve energy and environmental efficiency even while increasing the number of miles driven. In 2018:

- Combination trucks accounted for just **17%** of the total highway transportation fuel consumed
- Combination trucks consumed nearly **100 billion** fewer gallons of fuel than passenger vehicles in the U.S.



PARTNERSHIPS



Through the **U.S. Environmental Protection Agency's (EPA) SmartWay Transport Partnership**, the trucking industry is working with government and businesses to quantify greenhouse gas emissions and take steps to reduce them.